

Process Tolerance 提升產品設計品質的守門員

關於 Vartran

Vartran 可以執行所有標準的 statistical tolerancing worst-case tolerancing 以及靈敏度的分析，除了分析的功能之外，也可以利用現有的公差設定值去計算並選擇最佳的輸入值，也就是說，我們也可以稱 Vartran 為產品/流程的最佳化工具！

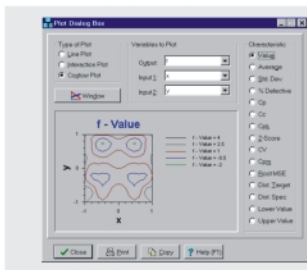
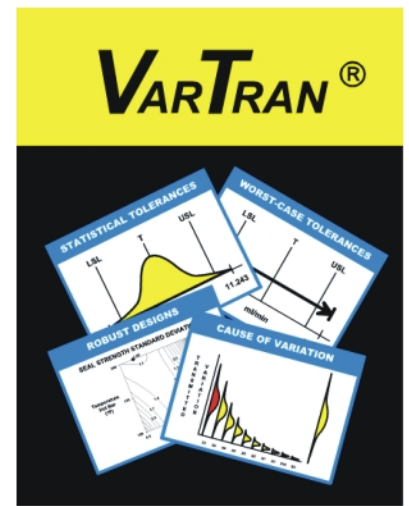
功能 / 特色

最佳化產品性能: Maximize Cpk/
Minimize percent defective/
Minimize Taguchi loss

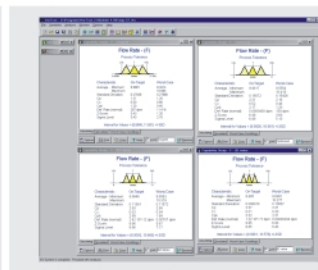
Achieve robust designs

Statistical tolerancing

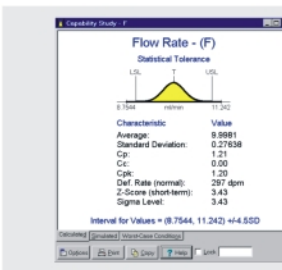
Worst-case tolerancing



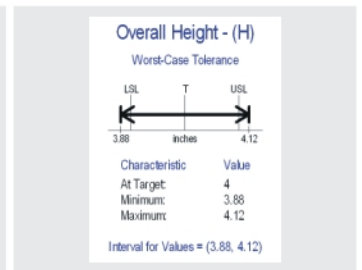
Process tolerancing
Sensitivity analysis



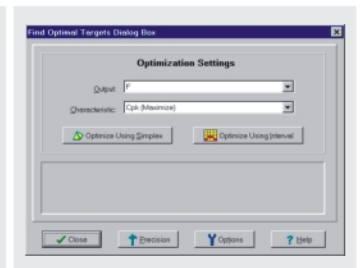
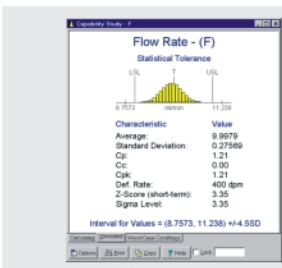
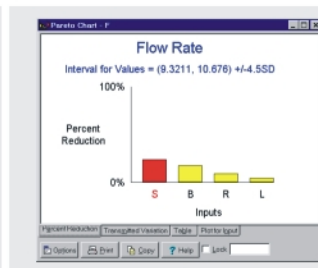
Variation Pareto Chart



Simulation Result

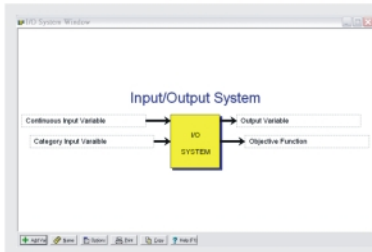


Optimization

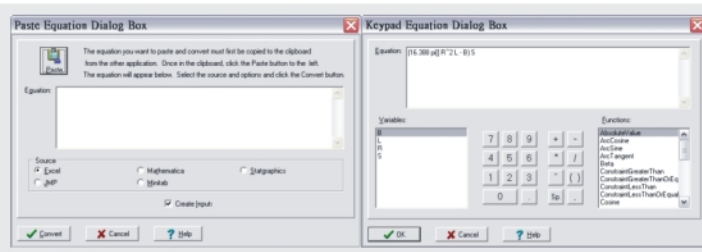


操作步驟

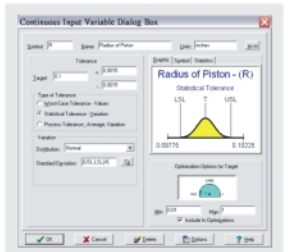
系統輸入輸出/



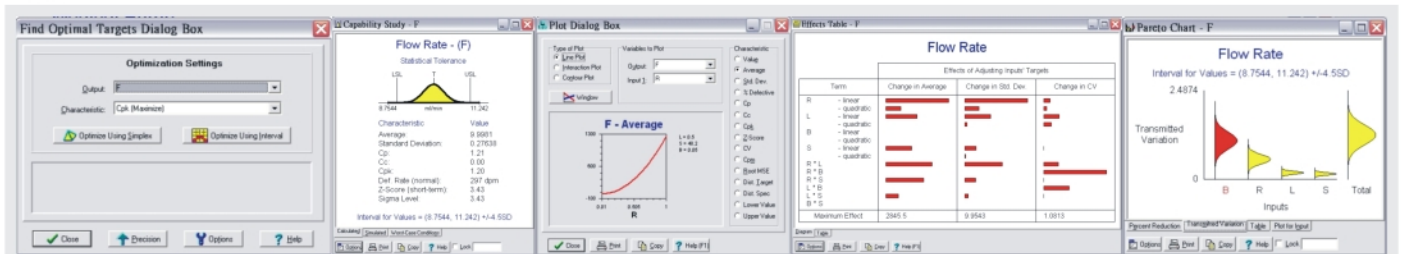
Equation



輸入公差值



結果

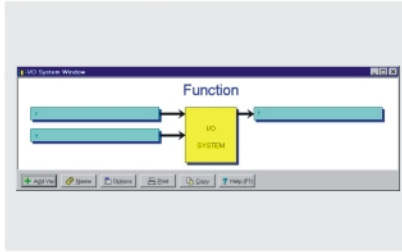


本型錄所有商標均屬其所屬公司擁有，嚴禁轉載使用



VarTran as a Mathematics Package

系統輸入輸出/



Equation

Output Variable Dialog Box

Equation: $x^2 + y^2 + \cos(x) + \sin(y) + \sin(x) + \sin(y) + \cos(x) + \sin(y)$

Target: _____ Lower Spec Limit: _____ Upper Spec Limit: _____

Method of Estimating Average and Standard Deviation: Taylor Series - 2nd Order

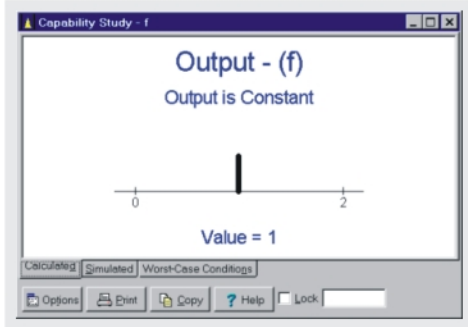
Include in Optimizations with Multiple Outputs

輸入公差值

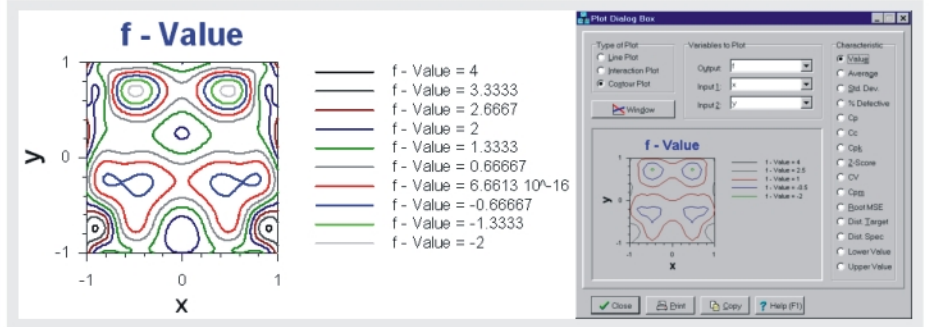
Summary Tables

Input	Type	Tolerance / Category
x	Constant	0 +/- 0
y	Constant	0 +/- 0

結果



結果圖



Analysis Find Optimal Targets Equation

Find Optimal Targets Dialog Box

Optimization Settings

Optimization completed. Better point found.

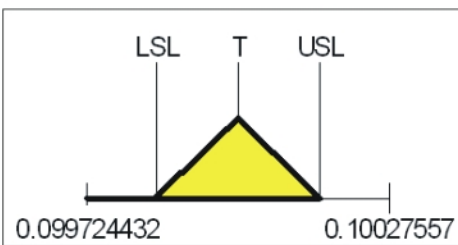
Output - (f)
Output is Constant
Value = 4.0619

Input	Type	Tolerance / Category
x	Constant	0.9082 +/- 0
y	Constant	-0.73633 +/- 0

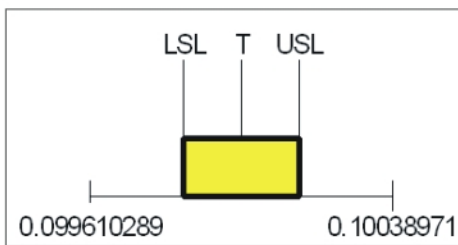


Variation Group Box

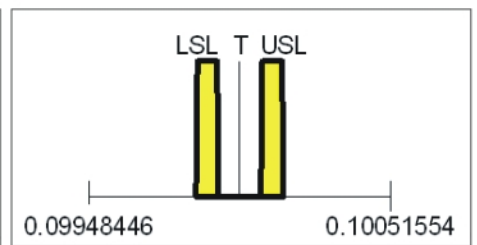
Triangular (Fit to Spec)



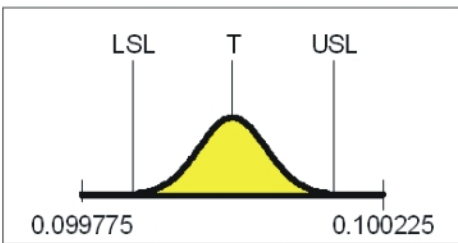
Uniform (Fit to Spec)



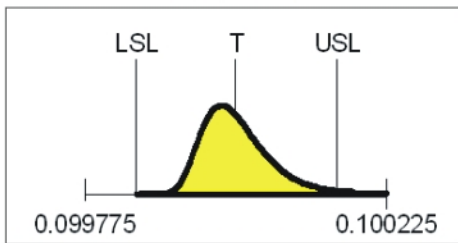
Uniform Minus Center 50%



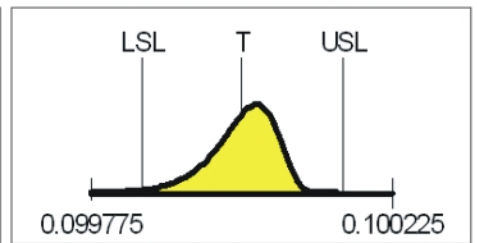
Normal



Lognormal



Negative Lognormal



適用專業工作站顯示卡

ATI FirePro V3800

PCIe2.0

512MB DDR3
64-bit
14.4GB/Sec
Dual Link DVI x1
DisplayPort x1

ATI FirePro V4800

Eyefinity
PCIe2.0

1GB GDDR5
128-bit
57.6GB/Sec
Dual Link DVI x1
DisplayPort x2

ATI FirePro V5800

Eyefinity
PCIe2.0

1GB GDDR5
128-bit
64GB/Sec
Dual Link DVI x1
DisplayPort x2

ATI FirePro V7800

Eyefinity
PCIe2.0

2GB GDDR5
256-bit
128GB/Sec
Dual Link DVI x1
DisplayPort x2

ATI FirePro V8800

Eyefinity
PCIe2.0

2GB GDDR5
256-bit
147.2GB/Sec
DisplayPort x4

ATI FirePro V9800

Eyefinity
PCIe2.0

4GB GDDR5
256-bit
147.2GB/Sec
Mini DisplayPort x6